



# AMBERLEY GREEN

## CONSERVATION STUDY PLAN

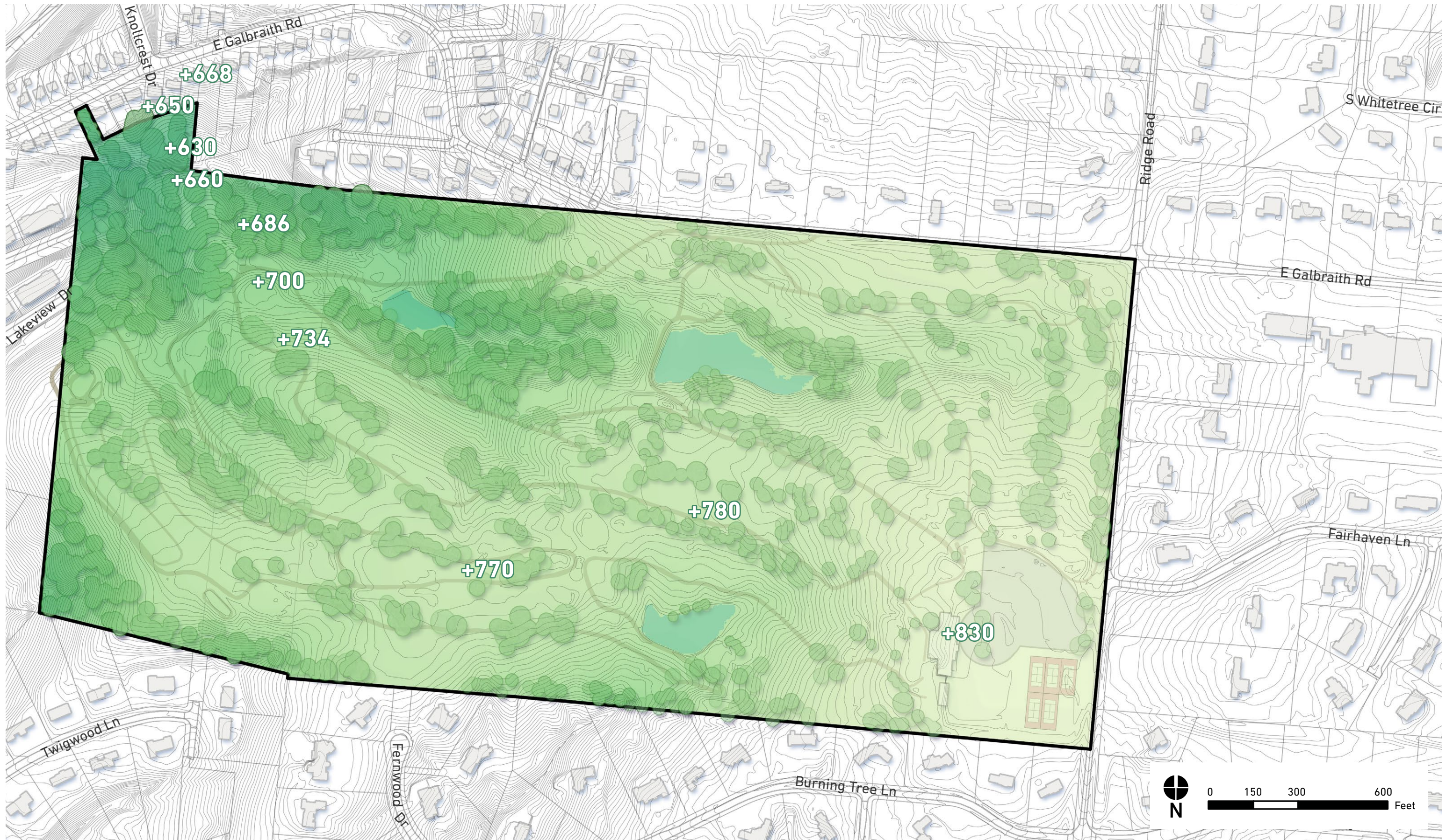
*FALL 2020*



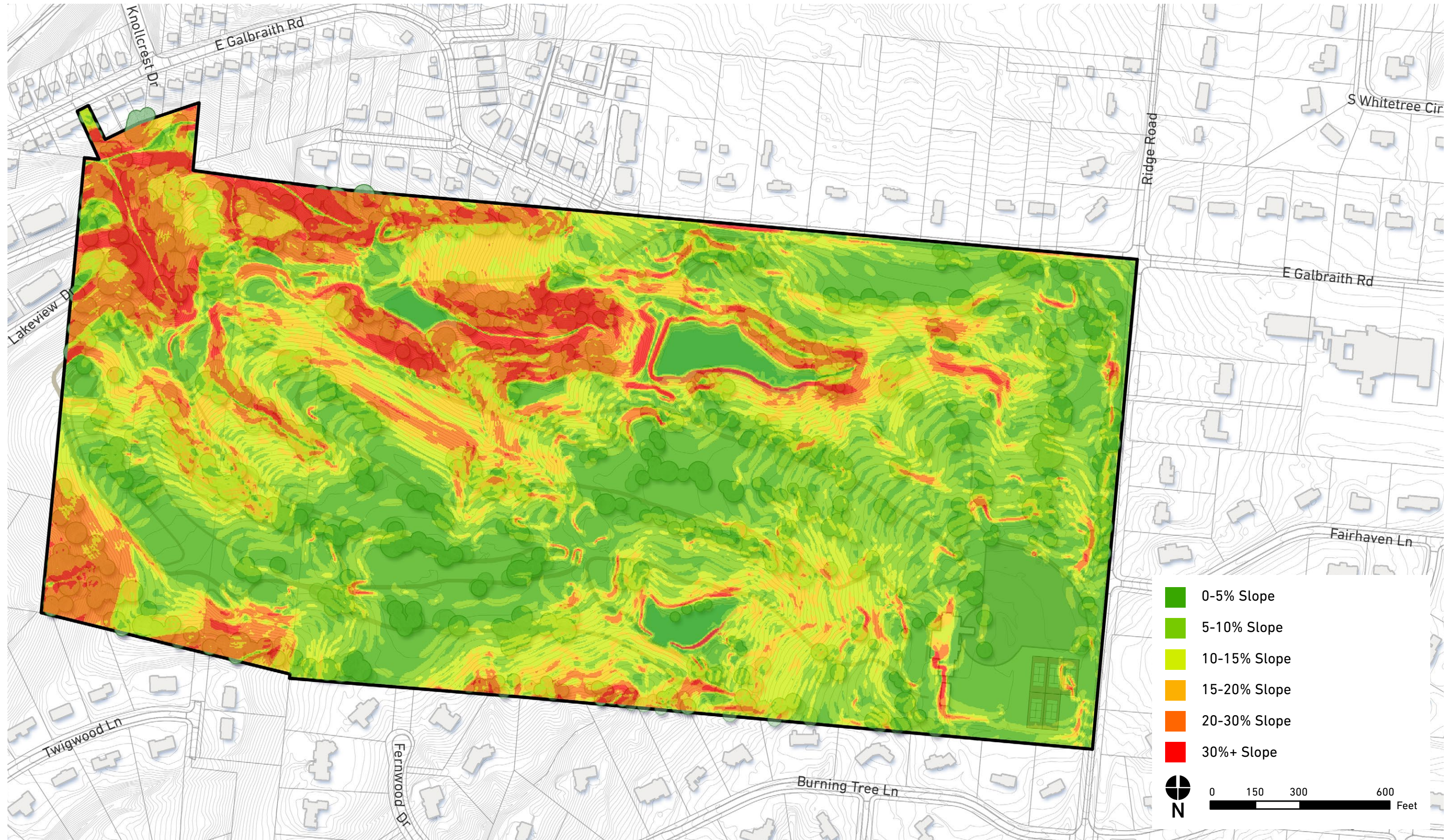
# EXISTING CONDITIONS



# ELEVATION



# SLOPE ANALYSIS



# INITIAL DEVELOPMENT SUITABILITY FROM 2018



# CONNECTIVITY STUDY (2019)



Twigwood / Willowbrook Connection

Fernwood Connection

Ridge Road Multi-Use Path

- In 2019, a study was conducted to evaluate strategies for improving pedestrian and bicycle mobility throughout the village.
- The study proposed a multi-use path along Ridge Road that would provide access to the Green.
- Additionally, the study examined possible alignment of paths that would connect the residential neighborhoods to the south and west to the Green.

# FRAMEWORK | SIGNIFICANT SLOPES



- Identified areas with slopes that become difficult to overcome for development.
- Only focused on considerable clusters of more extreme slopes

# FRAMEWORK | ENVIRONMENTALLY SENSITIVE AREAS





# FRAMEWORK | NOTABLE VIEWSHEDS



# FRAMEWORK | PRIMARY PATH NETWORK



2 mi Perimeter Loop Path

Ridge Road Multi-Use Path  
from Connectivity Study

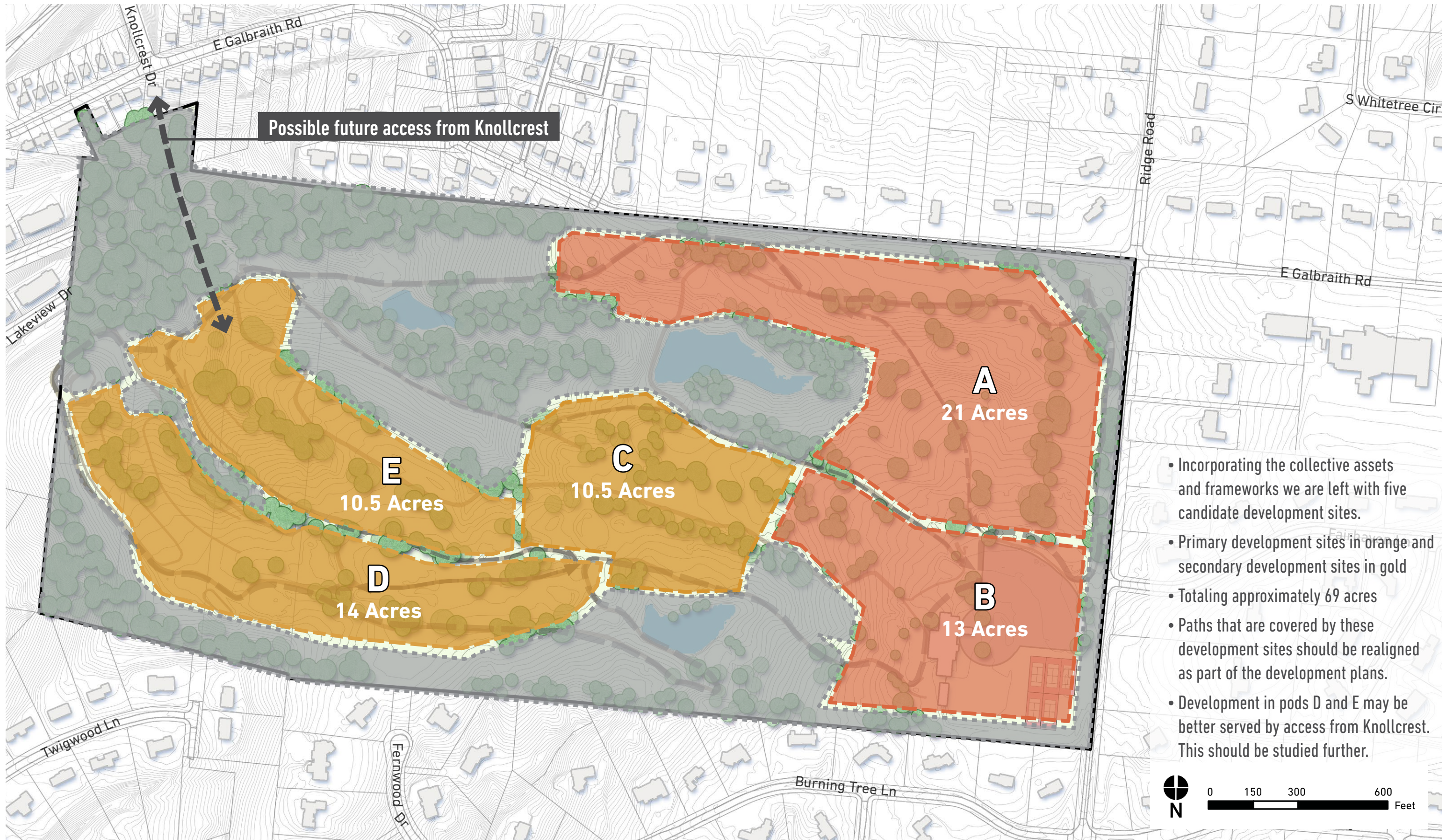
- We sought to identify a primary path network throughout the site.
- While not including every current path this identifies a pretty comprehensive system that should be preserved entirely or with slight alterations as a result of development impacts.
- For reference, we have also included the results of the connectivity study to show how the site could connect with the surrounding village.

# FRAMEWORK | NEIGHBORHOOD BUFFERS

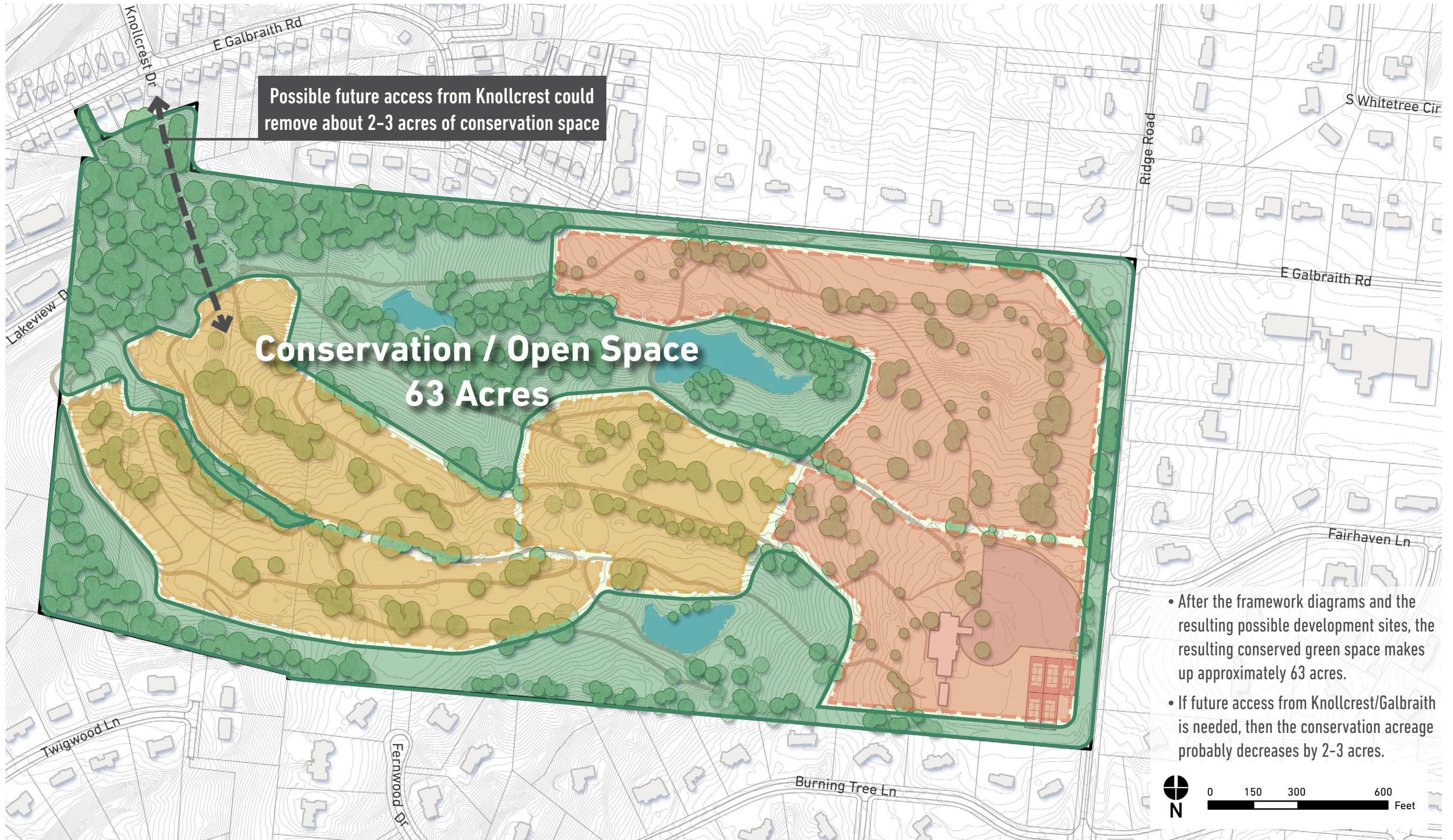


- A perimeter buffer of 50' helps to preserve the Green's natural aesthetic and recognizes the sensitivity that potential future development could have with surrounding residential properties.

# FRAMEWORK | DEVELOPMENT SITES



# OUTPUT | CONSERVATION GREEN SPACE



# CONSERVATION & OPEN SPACE

## USES & PROGRAMMING



# PROGRAMMING & USES | PATHS



- The path network will continue to support the bulk of user activity on the site.
- The Path network should include preserving a perimeter loop path as well as other paths to promote interconnectivity.
- Any development that disturbs the existing paths should realign the paths to keep the connections open.

# PROGRAMMING & USES | PLANTINGS



Pollinator Garden

Orchard

• The highlighted locations could offer potential for specific planting strategies including:

- Pollinator Gardens
- Orchards
- Improved Riparian Pond Edges
- Community Flower Garden
- Expanded Community Garden



# PROGRAMMING & USES | SIGNAGE & EDUCATION



**Educational Signage**



**Seating Area**

- The pink icons denote possible locations for educational opportunities.
- Possible focuses:
  - Plant identification and education
  - Site and Community History
  - Explaining prominent views
- Creating signage could be a partnership opportunity



# PROGRAMMING & USES | PLAYGROUND



Nature Play

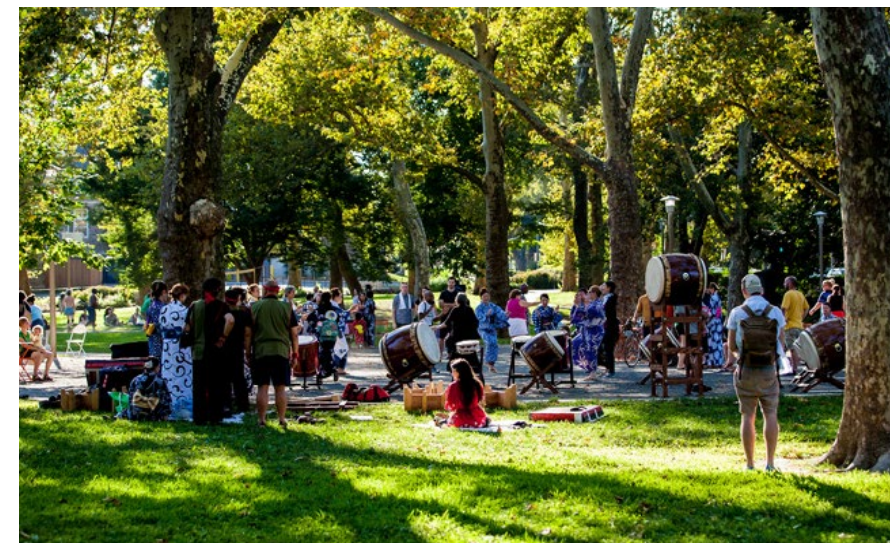
Playground

Fitness Structure

- The blue circles denote possible locations for a future playground or fitness structure.
- Based on the proximity to available parking, the playground would likely need to be incorporated into the layout of future development plans.



# OTHER POSSIBLE ELEMENTS



- Other Possible Elements for Discussion:
  - Village Commons or Community Gathering Space
  - Fishing Pier/Designation
  - Dog Run
  - Pavilions
  - Seating
  - Art Installations/Sculptures