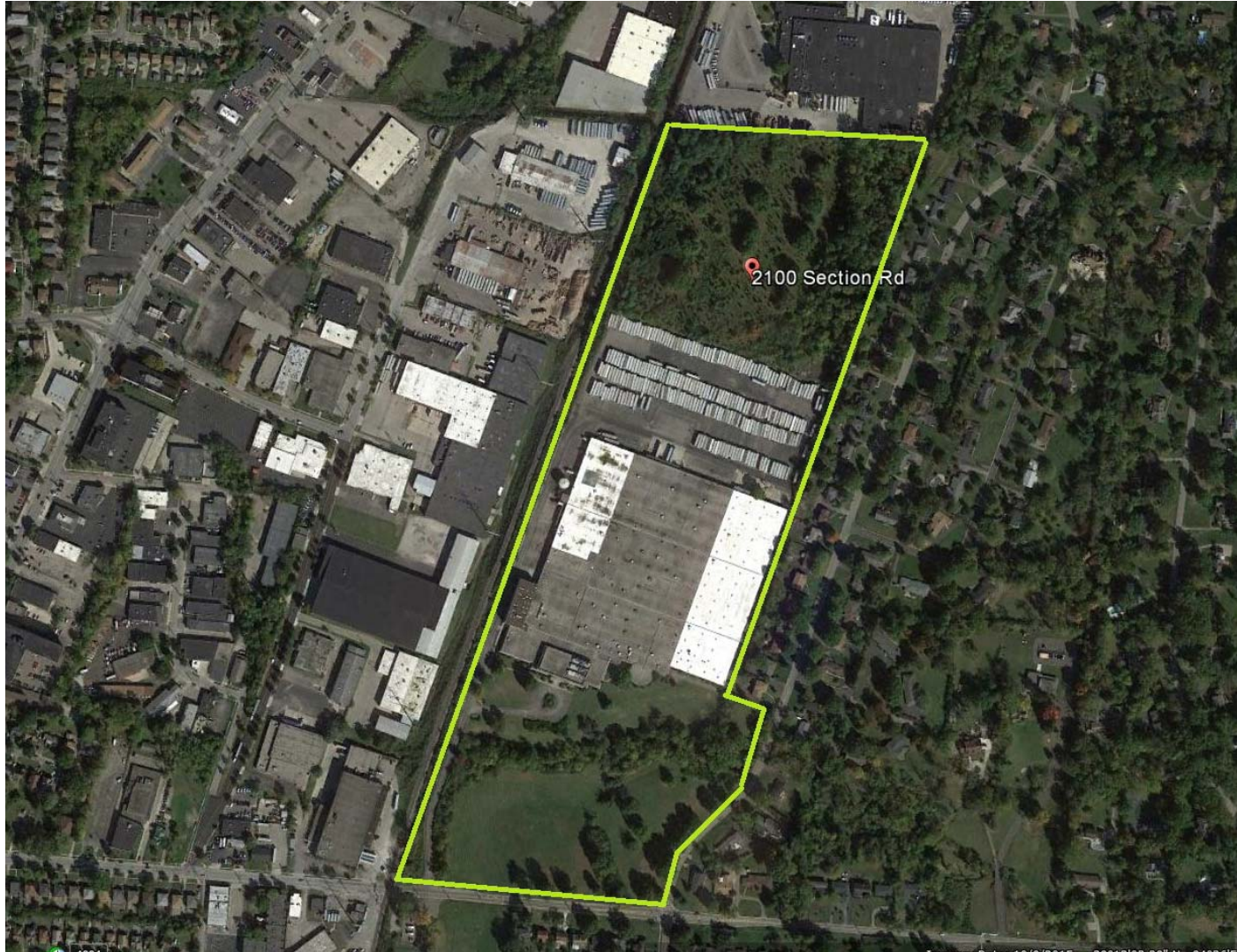


1

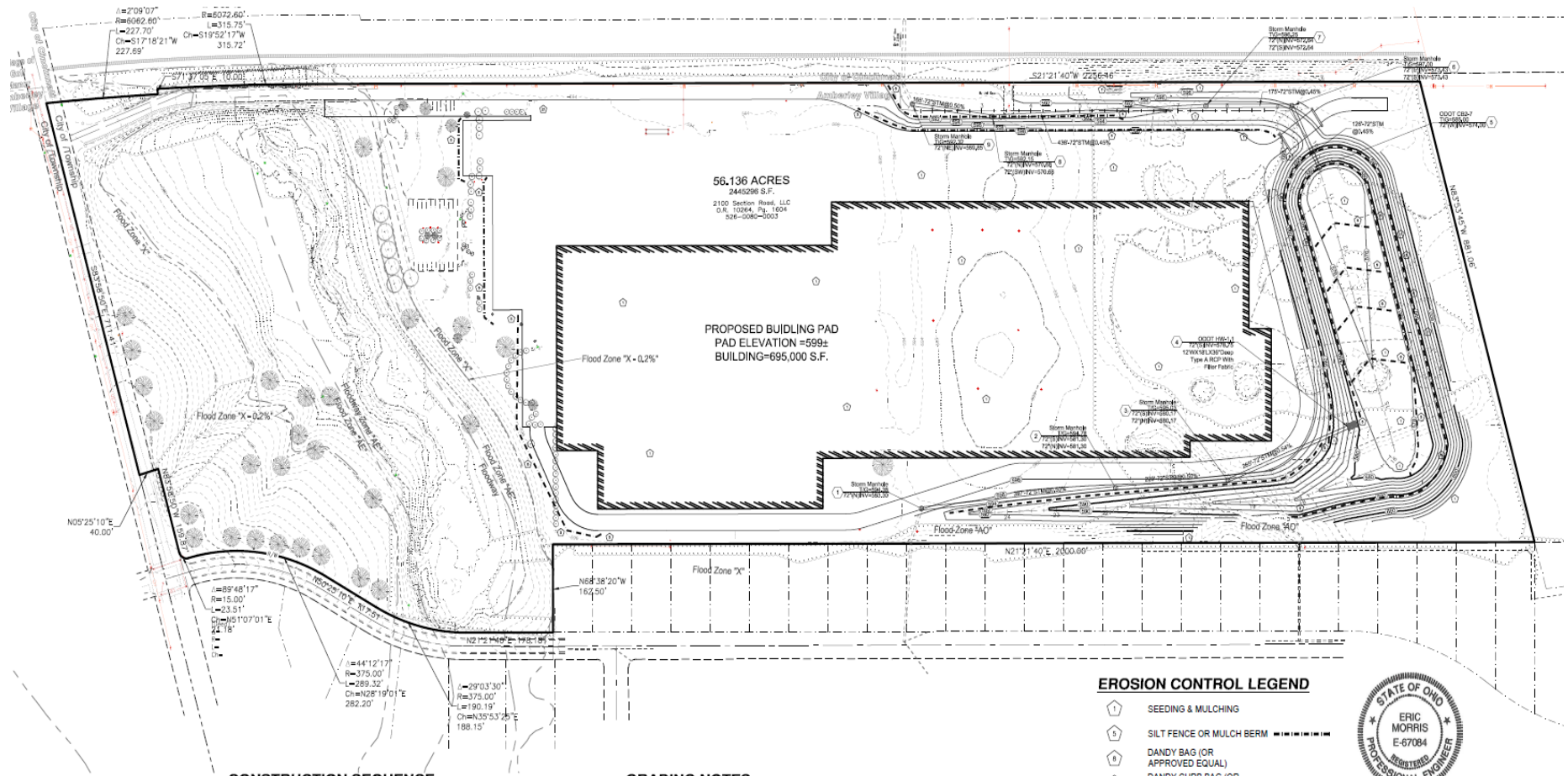
# 2100 Section Road

*Existing Aerial View*



# 2100 Section Road

## Grading Plan for Redevelopment



56,136 ACRES  
244,529.8 S.F.  
2100 Section Road, LLC  
D.B. 10384, Pp. 1604  
526-0085-0003

PROPOSED BUILDING PAD  
PAD ELEVATION = 599±  
BUILDING = 695,000 S.F.

**CONSTRUCTION SEQUENCE AND EROSION CONTROL NOTES**

**GRADING NOTES**  
1. THE GRADING PLAN IS TO BE USED FOR GRADING PURPOSES ONLY.

**EROSION CONTROL LEGEND**

- SEEDING & MULCHING
- SILT FENCE OR MULCH BERM
- DANDY BAG (OR APPROVED EQUAL)
- DANDY CURB BAG (OR APPROVED EQUAL)



## *Contact Us*

**Melissa Johnson**

*Vice President of Industrial Development & Logistics*

**[mjohnson@cincinnatiport.org](mailto:mjohnson@cincinnatiport.org)**

**513.632.3833**