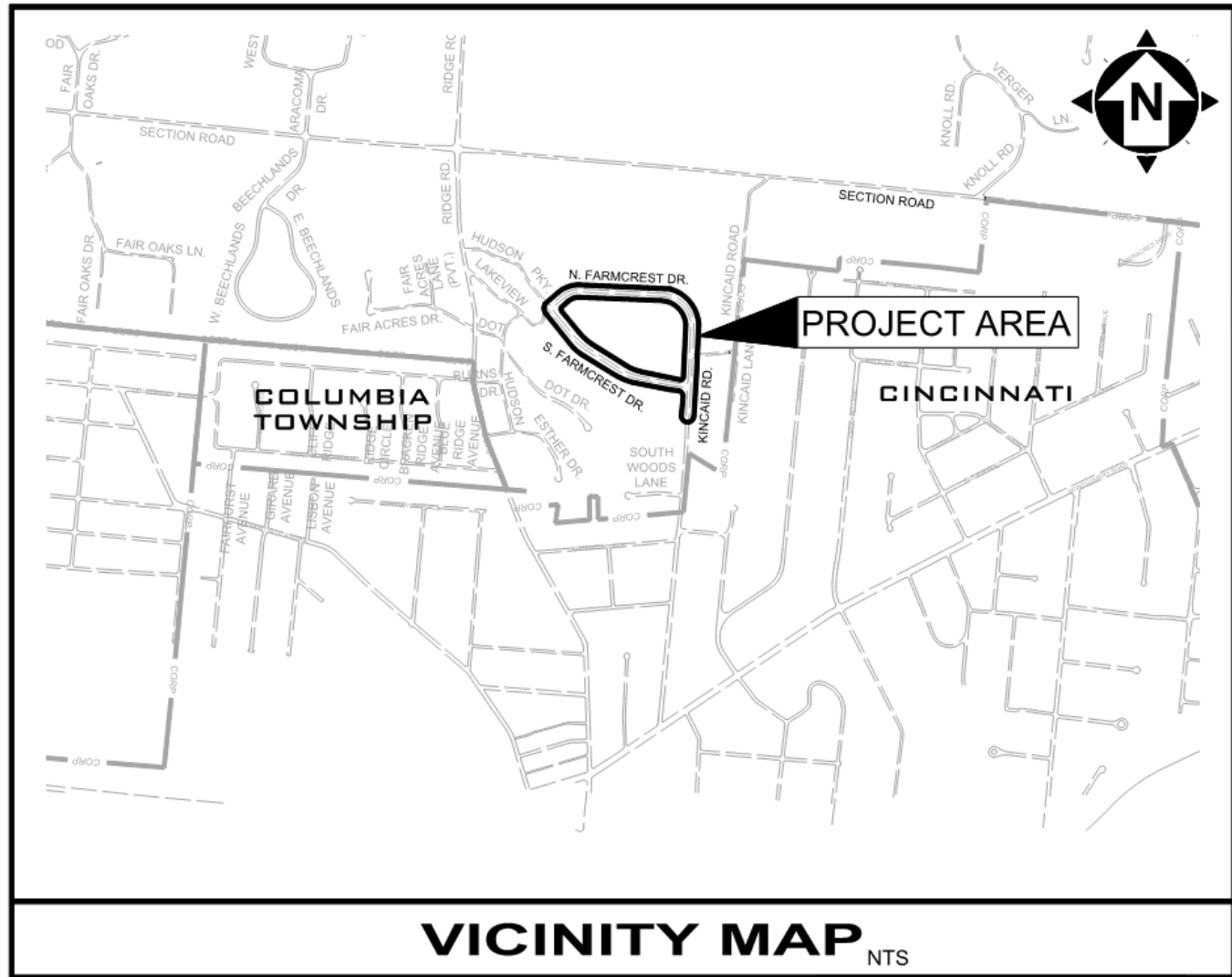


# North Farmcrest South Farmcrest Kincaid Road

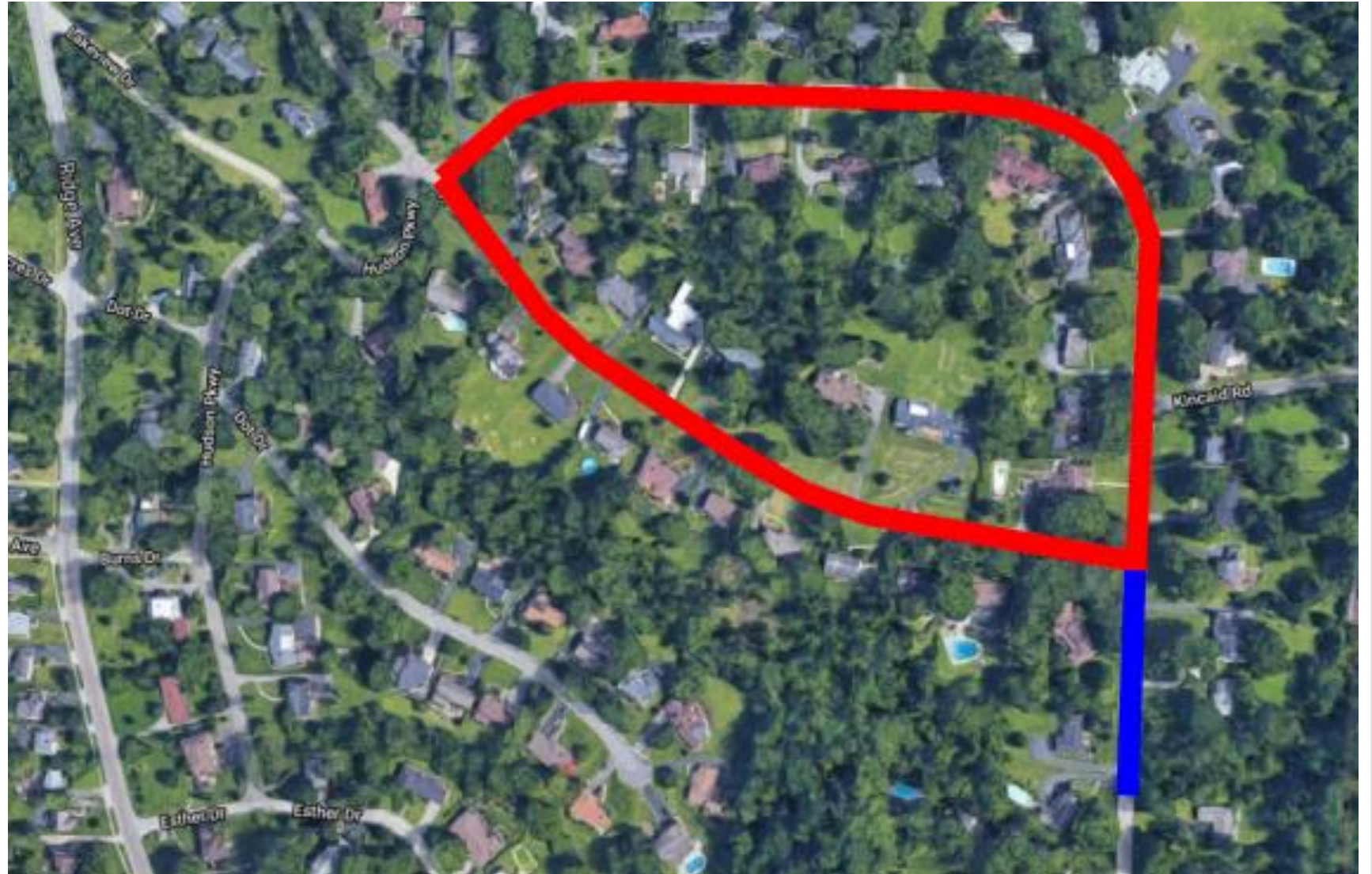
Informational Meeting  
December 15, 2021



# Project Location

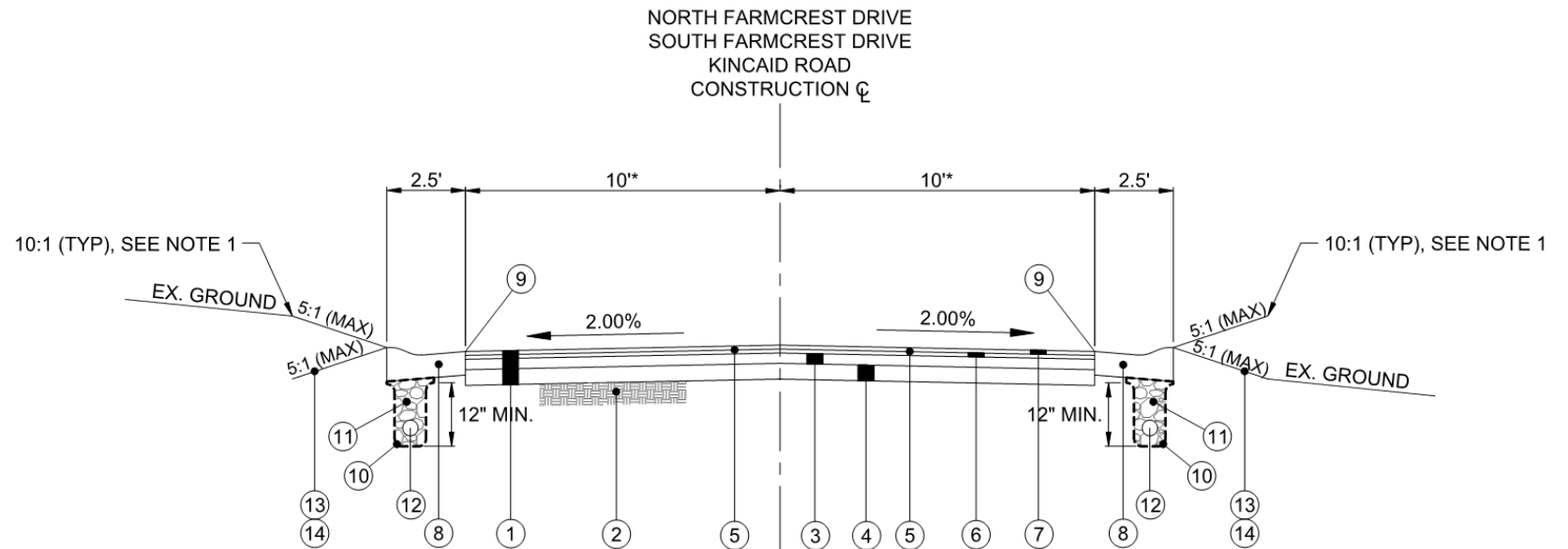


# Proposed Improvements



# Typical Section – Reconstruction

North Farmcrest  
South Farmcrest  
Kincaid – between  
N & S Farmcrest

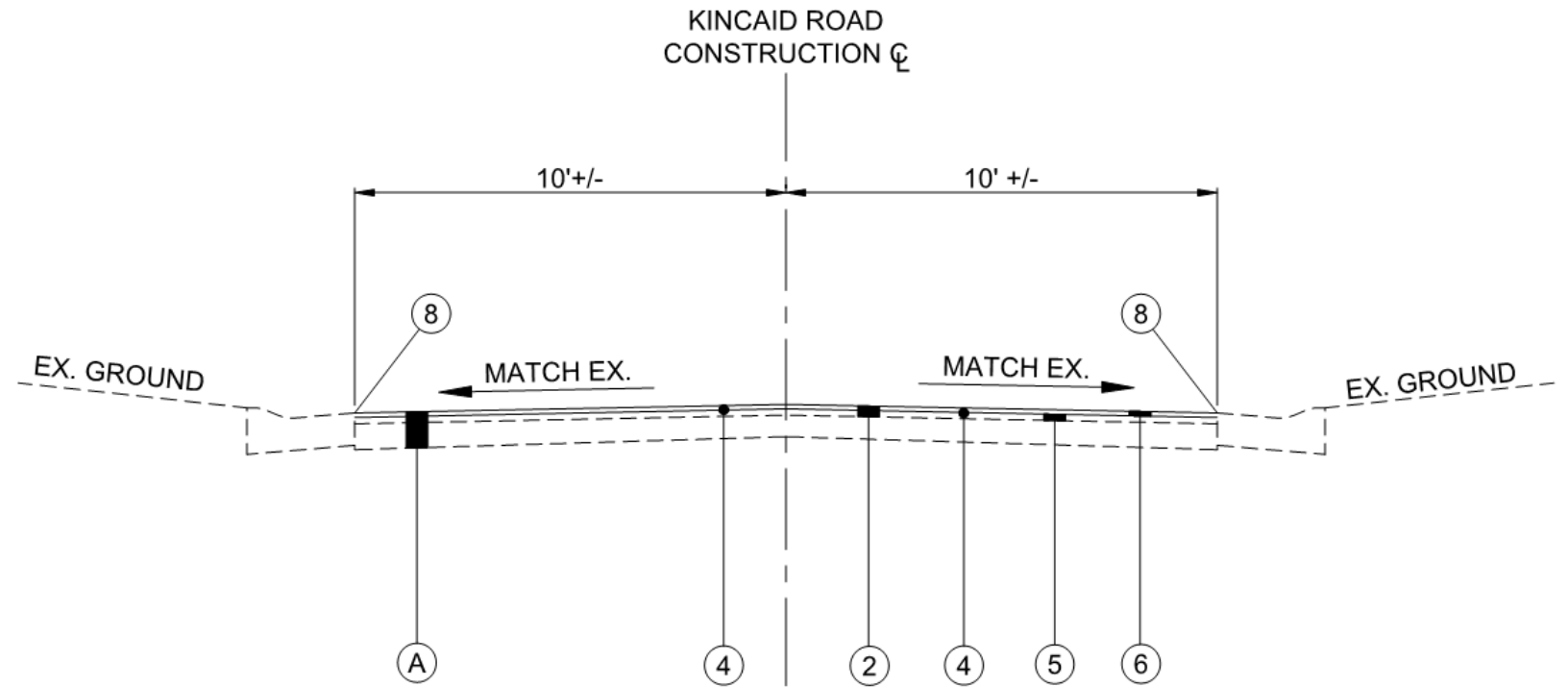


## TYPICAL SECTION

STA 0+00 TO STA 18+36.83 (NORTH FARMCREST - KINCAID)  
STA 0+35 TO STA 14+00 (SOUTH FARMCREST)  
(\*PAVEMENT WIDTH VARIES AT INTERSECTIONS,  
SEE GRADING DETAILS SHEETS 28-30)

# Typical Section – Resurfacing

Kincaid – South of  
S Farmcrest

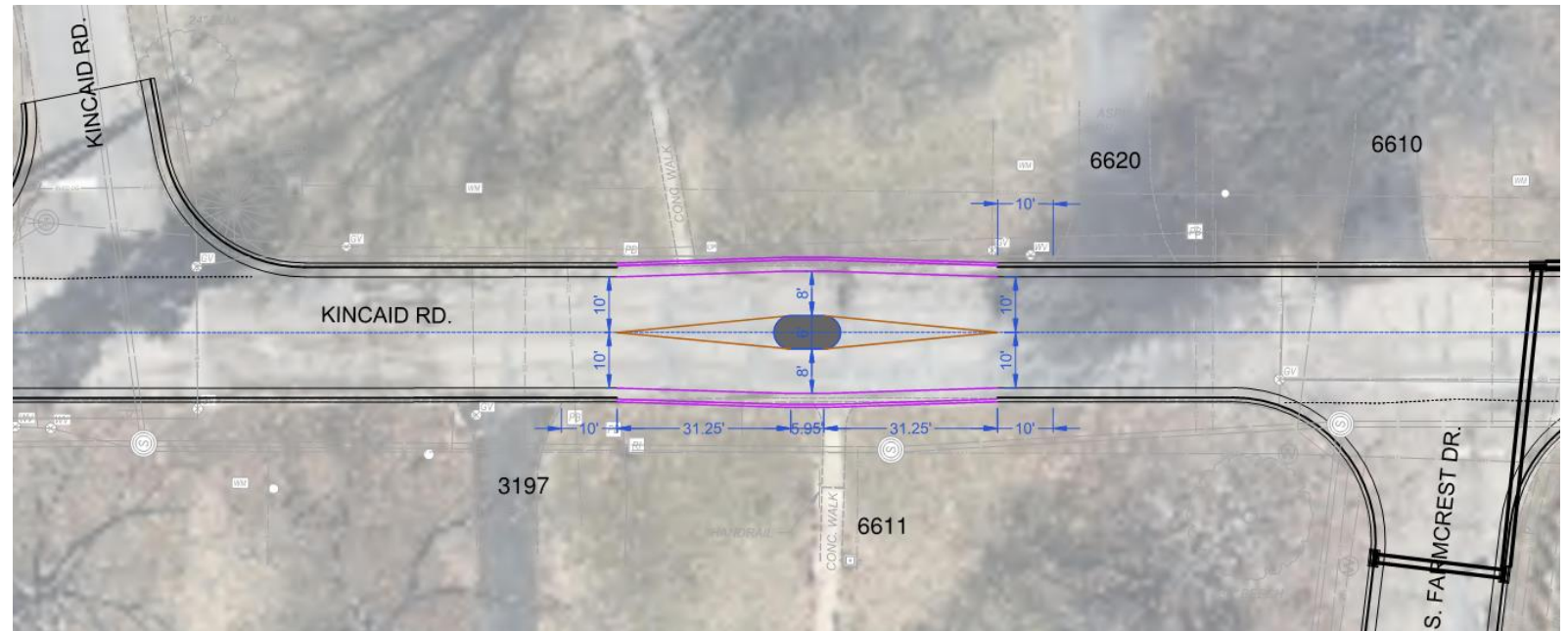
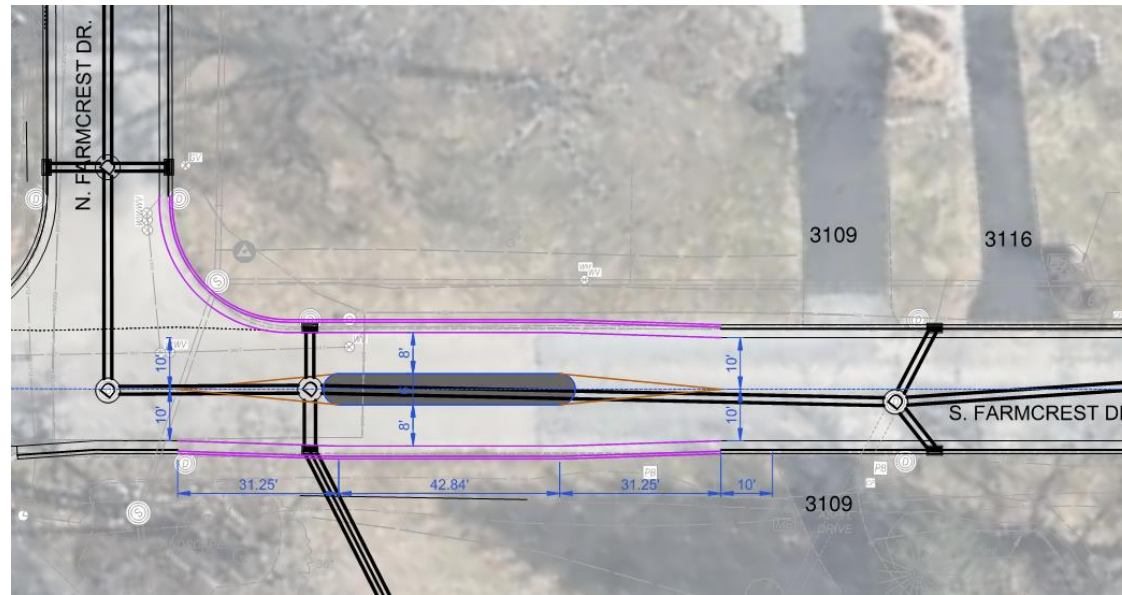


## TYPICAL SECTION

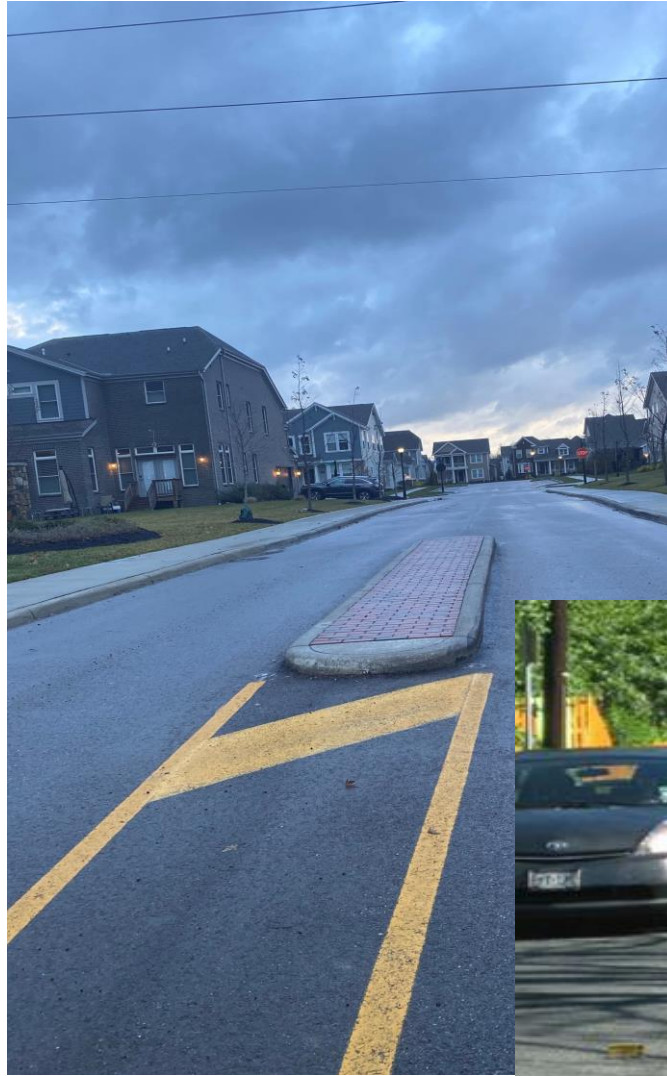
STA STA 18+36.83 TO STA 22+32.05 (KINCAID)



# Geometric Modifications – Center Medians / Islands



# Geometric Modifications – Center Medians / Islands





# Construction & Impacts to Residents



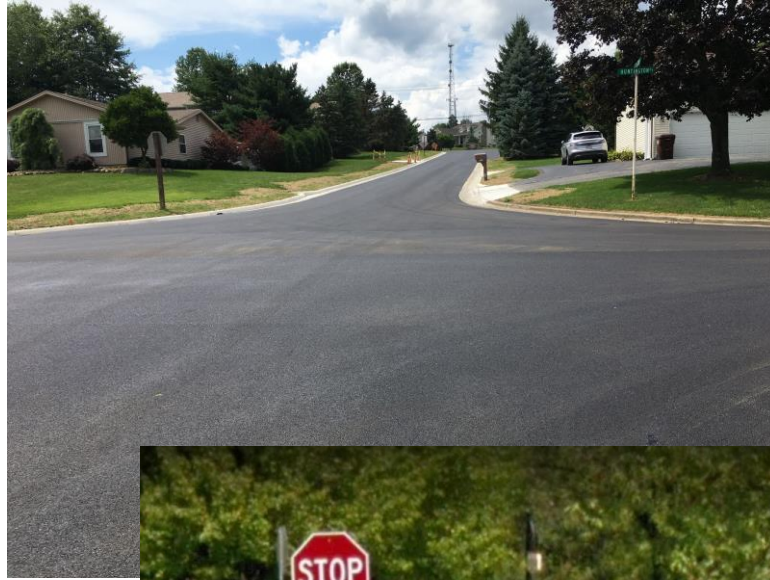


# Project Duration

## 2022

JANUARY							FEBRUARY							MARCH						
S	M	T	W	T	F	S	S	M	T	W	T	F	S	S	M	T	W	T	F	S
						1			1	2	3	4	5	6	7	8	9	10	11	12
2	3	4	5	6	7	8	6	7	8	9	10	11	12	13	14	15	16	17	18	19
9	10	11	12	13	14	15	13	14	15	16	17	18	19	20	21	22	23	24	25	26
16	17	18	19	20	21	22	20	21	22	23	24	25	26	27	28	29	30	31		
23	24	25	26	27	28	29	27	28												
30	31																			
APRIL							MAY							JUNE						
S	M	T	W	T	F	S	S	M	T	W	T	F	S	S	M	T	W	T	F	S
					1	2	1	2	3	4	5	6	7				1	2	3	4
3	4	5	6	7	8	9	8	9	10	11	12	13	14	5	6	7	8	9	10	11
10	11	12	13	14	15	16	15	16	17	18	19	20	21	12	13	14	15	16	17	18
17	18	19	20	21	22	23	22	23	24	25	26	27	28	19	20	21	22	23	24	25
24	25	26	27	28	29	30	29	30	31					26	27	28	29	30		
JULY							AUGUST							SEPTEMBER						
S	M	T	W	T	F	S	S	M	T	W	T	F	S	S	M	T	W	T	F	S
					1	2		1	2	3	4	5	6					1	2	3
3	4	5	6	7	8	9	7	8	9	10	11	12	13	4	5	6	7	8	9	10
10	11	12	13	14	15	16	14	15	16	17	18	19	20	11	12	13	14	15	16	17
17	18	19	20	21	22	23	21	22	23	24	25	26	27	18	19	20	21	22	23	24
24	25	26	27	28	29	30	28	29	30	31				25	26	27	28	29	30	
31																				
OCTOBER							NOVEMBER							DECEMBER						
S	M	T	W	T	F	S	S	M	T	W	T	F	S	S	M	T	W	T	F	S
						1			1	2	3	4	5					1	2	3
2	3	4	5	6	7	8	6	7	8	9	10	11	12	4	5	6	7	8	9	10
9	10	11	12	13	14	15	13	14	15	16	17	18	19	11	12	13	14	15	16	17
16	17	18	19	20	21	22	20	21	22	23	24	25	26	18	19	20	21	22	23	24
23	24	25	26	27	28	29	27	28	29	30				25	26	27	28	29	30	31
30	31																			

# Finished Product



# Information for Village & Design Team





*thank  
you*

Frank Twehues, P.E.  
Office 513-792-8421  
[ftwehues@ctconsultants.com](mailto:ftwehues@ctconsultants.com)